



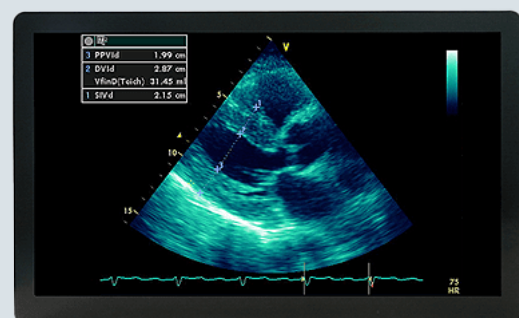
## Wamee 4K Medical Grade Monitors

### Viewing Clarity for Medical Applications

Electronic equipment in clinical settings need to be medical grade in order to provide the right protection for patients. Wamee medical monitors are available in 4K resolution, rated IP65 (front) giving protection against dust and other particulates and meet the EN 60601 standards ensuring electrical and radiation safety. The fanless design is quiet and offers cleaner operation. The monitors are available in varying sizes to cater to a range of end uses including imaging and Operating Room.

### Features

- IP65 in front & IPx1 whole unit
- DIN6868-157 compliant
- BT standards
- Calibration mode
- GPIO Remote control (optional)
- PIP & PBP
- 3-year warranty



Specifications	WM-27-4K	WM-32-4K
Size	27"	32"
Screen & Housing	True flat with AR. Aluminum housing & plastic cover for I/O ports (PCAP touch optional)	True flat with AR. Aluminum housing (PCAP touch optional)
Resolution	3840 x 2160	3840 x 2160
Backlight	LED	
View Angle	178 (H,V)	
Brightness	740 nits (typical)	650 nits (typical)
Colour Gama	NTSC 92%	NTSC 72%
Contrast	1000:1	1000:1
Input Interface	VGA x 1, DVI x 2 HDMI x 1 DisplayPort x 1 USB HUB/calibration x 1 3G-SDI in x 1	
Output Interface	3G-SDI out x1	
OSD Control	Touch Keypad 8 key Power/Increase /Decrease/Menu/Swap/PIP/Source/Touch Disabled	
Dicom Compliant	Yes	Yes
Auto Luminance Stabiliser	Yes	No
PiP & PbP	Yes	No
Power Supply	24V DC medical adapter in 150W	
Accessories	DP cable x 1, HDMI cable x 1, power cord x 1	
Dimensions	639.1 x 411.8 x 45mm (without base)	761.2 x 465.6 x 61.5mm (without base)
Weight	10.5kg (without base)	10.76kg (without base)
Certifications & Standards	FCC B, CE (IEC/EN 60601-1, ed3.1; EN 60601-1-2, 4.0th)	FCCB, CE (IEC/EN 60601-1: ed.3.1; IEC/EN 60601-1-2:2014/2015, 4th ed.)