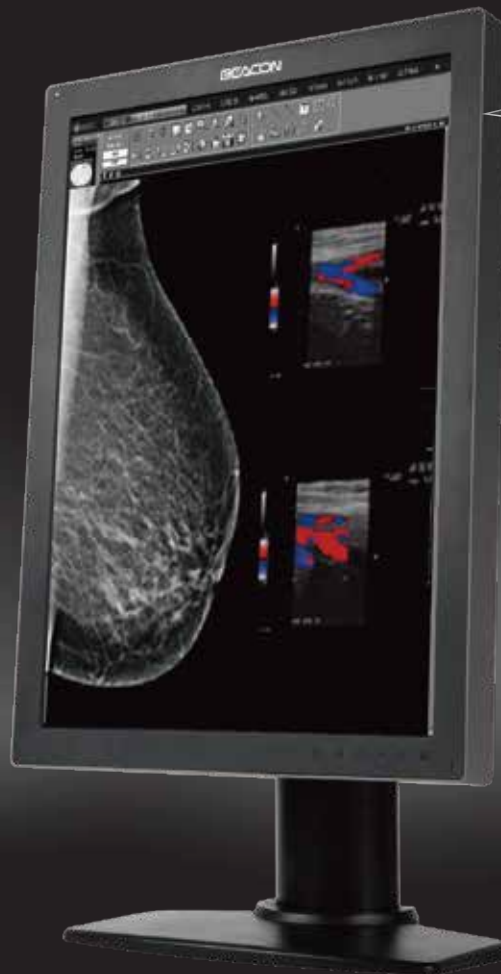


C53S+

5MP Colour Medical Display



Low Blue Light



Diagnostic

5MP Colour Medical Display

Blue light is existed abundantly in the display. Long-term overexposure to blue light could lead to an increased risk of macular degeneration, glaucoma, cataracts, and other retinal eye degenerative diseases. Beacon's low blue light diagnostic medical monitor could reduce these risks by decreasing harmful blue light by more than 50% dramatically.

C53S+ is with colour and grayscale imaging functions, with 5MP (2560X2048) high resolution, high brightness, high contrast ratio and wide viewing angle can be applied to various medical image equipment and PACS system.

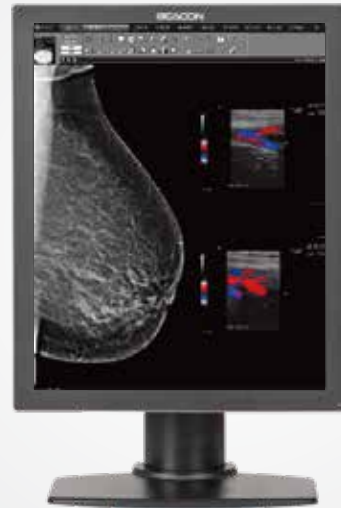
Each monitor is strictly calibrated to compliant with DICOM standard, ensure the accurate display of medical images and details. The built-in backlight stabilisation system can ensure the consistence performance in long-term use.

C53S+

5MP Colour Medical Display

Application Area

- Digital Mammography
- DR



Ambient Light Adaptive System (ALAS)



Backlight Stabilisation System (BSS)



Compliant with DICOM Standard



Built-in multiple display mode



QA Software



Low Blue Light

Technical Specification

Model	C53S+
Display size	21.3"
Support color	1.07 Billion
Resolution	2560x 2048
Pixel Pitch	0.165x 0.165mm
Brightness	1150cd/m2 Typ.
Contrast	2000:1 Typ.
Angle of view	178° Typ.
Response time	11ms Typ.
Input signal interface	DisplayPort: 20 pin DVI-D : 24 pin
Size	395(W)x550~630(H)x235(D)mm
Weight	9.5 kg
Stand Mounting	VESA 100x100mm
Power supply	DC 12V
Power consumption	80W max.
Power saving	EPA, VESA
MTBF	> 50,000Hours



Perth Unit 2, 61 Prosperity Ave Wangara WA 6065
Brisbane 20/300 Cullen Avenue East, Eagle Farm QLD 4009
Sydney Unit 4, 6-8 Byfield St Macquarie Park NSW 2113
Melbourne Unit 15, 484 Graham St Port Melbourne VIC 3027
1300HPAUST | info@hpaust.com www.hpaust.com

BEACON

All specifications are subjected to change without prior notice.