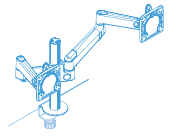


lima

Lima Arm only
LMA/001/002

LMA/001/002 is used only to
upgrade LMA/001/001 into a
dual screen solution



◆ KEY FEATURES

- Additional arm for dual screen applications
- Supports up to 6.5kg in monitor weight
- Articulation range and smoothness of motion
- Height adjustability achieved using push button technology
- Tool less installation (with the exception of fixing VESA plate to monitor)
- Material selection and 'design-for-disassembly' make Lima 100% recyclable at the end of its operational life.
- Available in Black, White and Grey

See configuration sheet 'Lima Dual Screen' for full range of dimensional specification measurements in dual screen use or LMA/001/001 for single screen use

Maximum Load Range:	6.5kg (14lbs)
Maximum Reach:	456mm
Vertical Range:	210mm
Tilt Range:	+80° / -10°
Recycled content:	15.9%
Total product recyclable:	100%

ORDERING INFORMATION

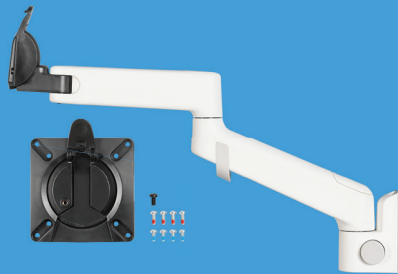
WARRANTY

Product Description:	Lima Arm	Warranty Term	Limited lifetime
Product code:	LMA/001/002		
Colour:	/G: Grey or /W: White or /B: Black		

LOGISTICAL

BOX CONTAINS

Lima arm, VESA mount plate & VESA fixing screws

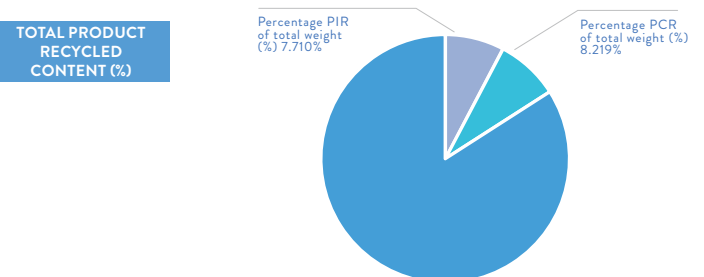
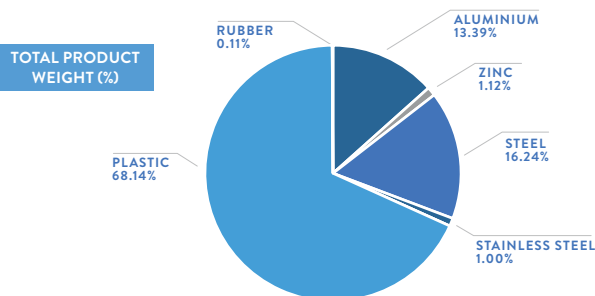


Product net weight:	0.9kg
Box dims (HxWxD):	535mm x 172mm x 70mm*
Box gross weight	1.3kg
Master carton quantity	6
Master carton dims (HxWxD):	560 x 365 x 235mm
Master carton weight:	8.6kg
Country of origin:	India
Country of configuration:	UK

Note: Some logistical data is estimated and subject to future confirmation.*

ENVIRONMENTAL

MATERIAL MAKE-UP			TOTAL RECYCLED CONTENT	BREAKDOWN OF RECYCLED CONTENT		TOTAL RECYCLABLE	
Overall Product			Overall Product	Overall Product		Overall Product	
Material type	Total Material type weight (g)	Percentage of Total Product Weight (%)	Material-Type Recycled Content (%)	Percentage PIR of total weight (%)	Percentage PCR of total weight (%)	Total Product Recyclable (g)	Total Product Recyclable (%)
Aluminium	120	13.39%	12.72%	6.74%	5.98%	120	13.39%
Zinc	10	1.12%	0.49%	0.25%	0.25%	10	1.12%
Steel	145.5	16.24%	2.11%	0.36%	1.75%	145.5	16.24%
Stainless Steel	9	1.00%	0.60%	0.36%	0.24%	9	1.00%
Plastic	610.5	68.14%	0%	0%	0%	610.5	68.14%
Rubber	1	0.11%	0%	0%	0%	1	0.11%
Total	896	100%	15.929%	7.710%	8.219%	896	100%



COMPLIANCE & SAFETY CERTIFICATION

Whilst no mandatory standards apply to the monitor arm product sector, all Colebrook Bosson Saunders monitor arms have been designed with appropriate articulation features, dimensional range and adjustability to conform to the requirements of BS EN ISO 9241:5 1999 Ergonomic requirements for office work with visual display terminals (VDTs).

CLEANING, STORAGE & MAINTENANCE

Routine servicing	Periodic inspection
Service components	Available to order
Cleaning & Maintenance	Damp cloth, no abrasives, no solvents to be used on the cosmetic surfaces
Handling & Storage	Do not drop or expose to moisture

While every effort is made to ensure the accuracy of our technical information, Colebrook Bosson Saunders (Products) Ltd accept no liability for the accuracy of the information contained in this document and reserve the right to modify the specifications or data contained herein without prior notification.

Doc Rev 1. Product Rev #A / 04.04.2019 CF